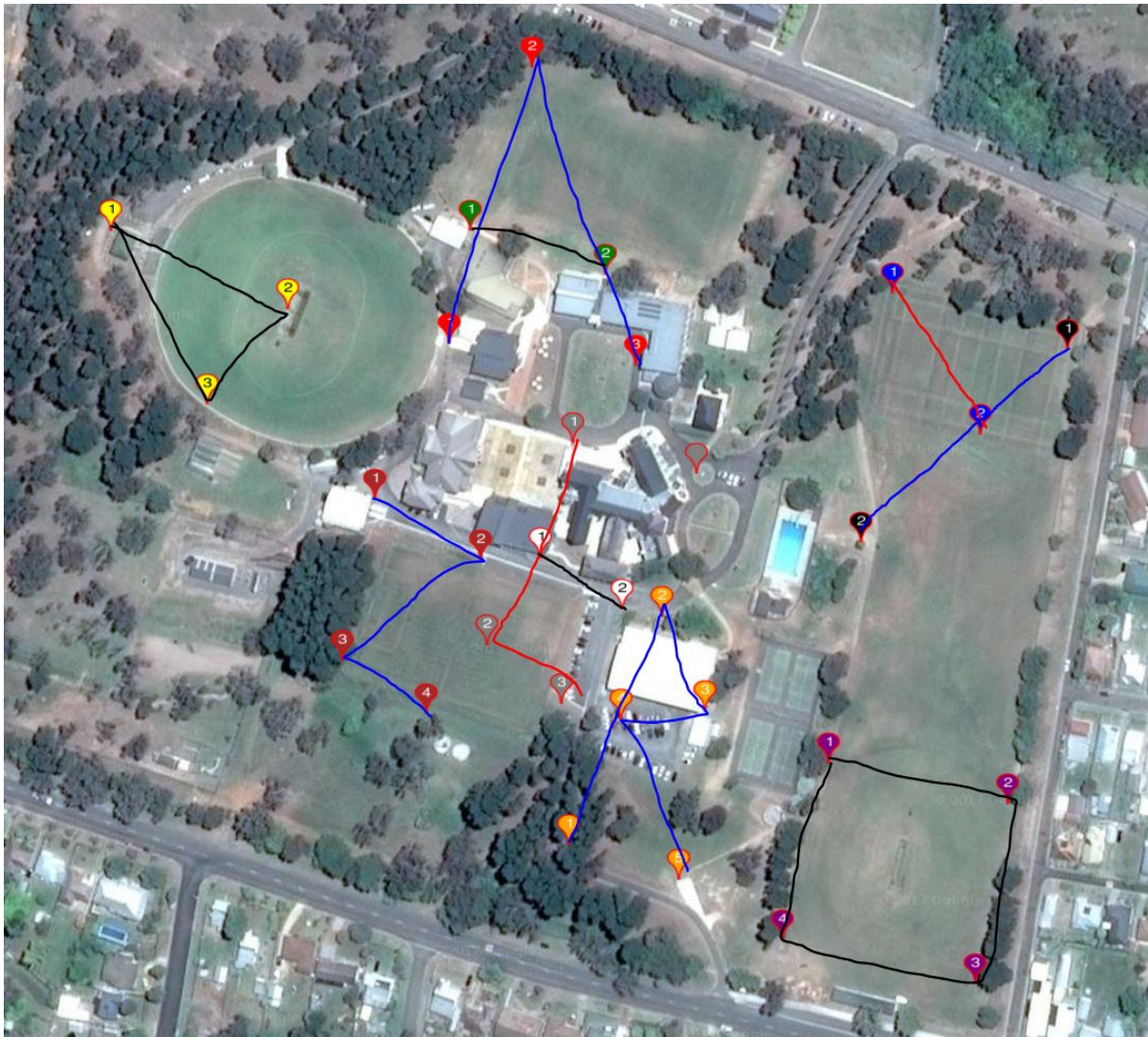


## Geo-caching Master Setup Map



Co-ordinates to check they are in the right place:

Colour	Number	Lat	Long
yellow	1	-34.750323	149.697289
yellow	2	-34.750653	149.698196
yellow	3	-34.751056	149.697779
red	1	-34.750799	149.699022
red	2	-34.749633	149.699442
red	3	-34.750891	149.699976
green	1	-34.750323	149.699129

green	2	-34.750508	149.699821
blue	1	-34.750585	149.701292
blue	2	-34.751180	149.701738
black	1	-34.750823	149.702183
black	2	-34.751638	149.701126
brown	1	-34.751457	149.698642
brown	2	-34.751713	149.699179
brown	3	-34.752136	149.698471
brown	4	-34.752357	149.698900
grey	Survival Depot	-34.751343	149.700284
grey	1	-34.751219	149.699656
grey	2	-34.752070	149.699216
grey	3	-34.752313	149.699597
white	1	-34.751700	149.699485
white	2	-34.751916	149.699903
orange	1	-34.752910	149.699634
orange	2	-34.751947	149.700107
orange	3	-34.752346	149.700331
orange	4	-34.752379	149.699898
orange	5	-34.753056	149.700197
purple	1	-34.752568	149.700960
purple	2	-34.752740	149.701877
purple	3	-34.753496	149.701715
purple	4	-34.753311	149.700728

Each bucket has a label with the colour and number, and the matching coordinates. Please make sure you double check you're in the right place.

There are some spare decoy buckets - place these somewhere sort of obvious, but not at the cache locations. Don't forget where you put them, we'll need to go and collect any that the students do not find.

The remaining billy cart parts need to go at the "Survival Depot" location.